



USER INTERFACE GUIDE

# Navigation and User Interface

A guide to views, tables, graphs, and hierarchies in Shasta Cloud

---

**DOCUMENT TYPE**  
User Interface Guide

**PLATFORM**  
Shasta Cloud v4.1

**LAST UPDATED**  
April 23, 2026

**VERSION**  
4.0

# Contents

## Table of Contents

— Overview

1 Views

2 Tables

3 Graphs

4 Hierarchies

5 Multitasking

6 Data Exports

7 List Scrolling

## Overview

This guide provides a comprehensive overview of Shasta Cloud's navigation structure and user interface features — including the three navigation views (Business, Deployment, and Network), the table controls used throughout the platform (filtering, sorting, columns, and export), the graphing capabilities (time range, zoom, tooltips), the hierarchical structure used for network management, multitasking with multiple tabs, and progressive list scrolling for large datasets.

Scope: Entire Platform

Audience: All Users

Reference Guide

Shasta Cloud Platform

## Section 1 — Views

Shasta Cloud offers three distinct navigation views, which can be switched using the **View Selector** located at the top-right corner of the user interface. The View Selector contains three icons corresponding to **Business View**, **Deployment View**, and **Network View**.

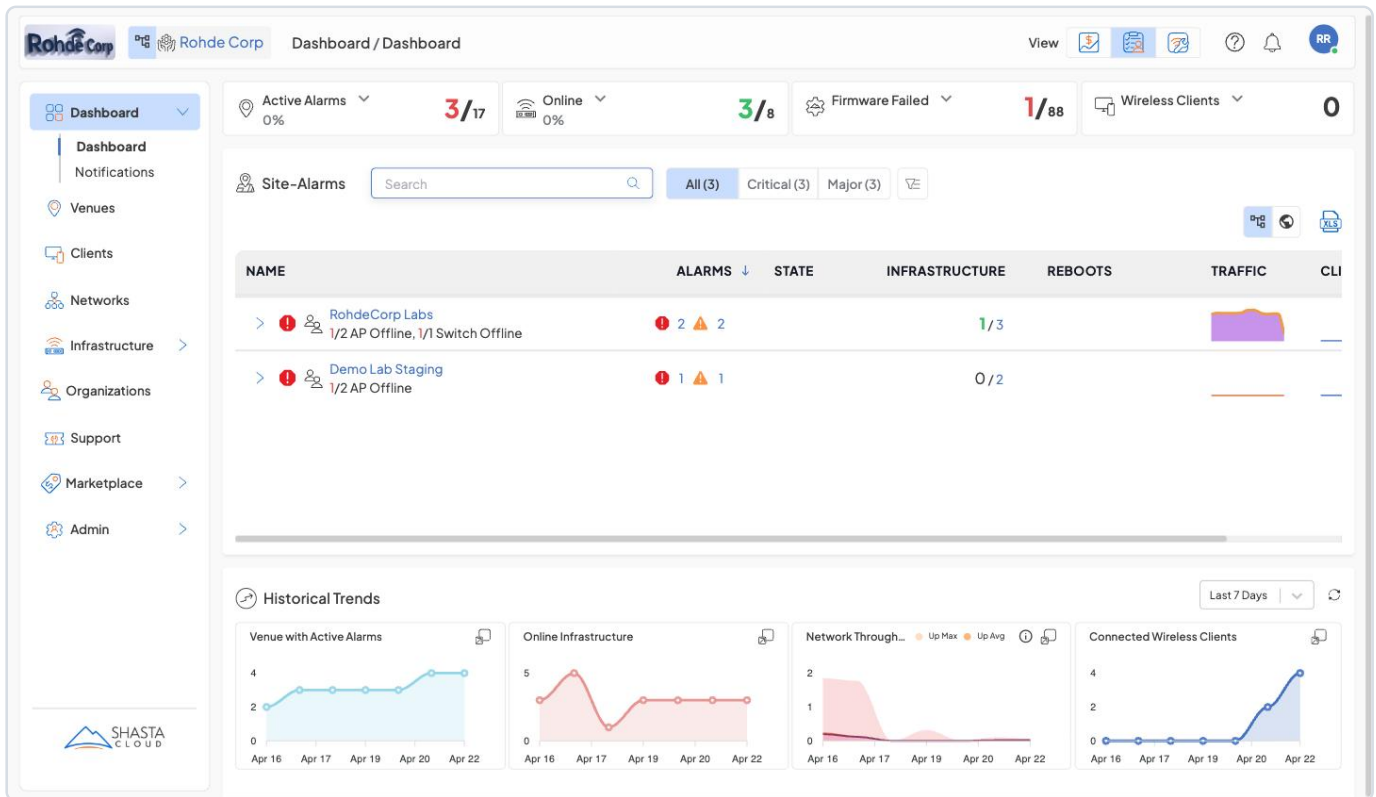


Figure 1 — Dashboard showing the full UI with the View selector icons in the top-right corner. Business View icon is active (highlighted).

Hovering over each icon displays a tooltip with the view's name, helping you identify it before clicking.



Figure 2 — Hover tooltips on the three View selector icons: Business View (first), Deployment View (second), and Network View (third).

View	Icon Position	Best Used For
<b>Business View</b>	Left (first icon)	Managing organizations, venues, clients, and business-level reporting.
<b>Deployment View</b>	Center (second icon)	Tracking device deployment status, firmware, and provisioning workflows.

View	Icon Position	Best Used For
Network View	Right (third icon)	Monitoring network health, traffic, and real-time infrastructure status.

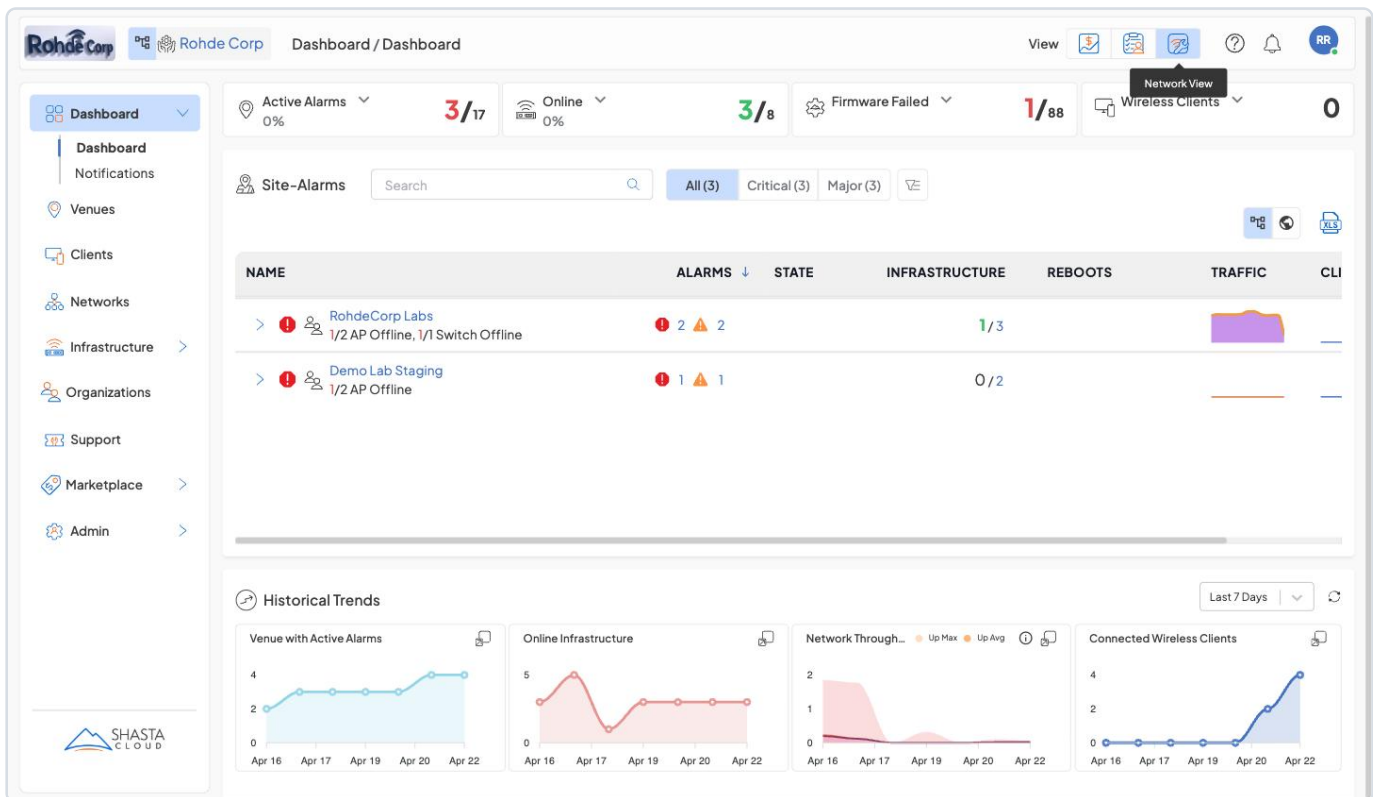


Figure 3 — Network View icon highlighted in the View selector, confirming the active view.

**Note:** Each page displays different elements and columns depending on the selected view. Refer to page-specific articles for details on what each view shows per section.

## Section 2 — Tables

Tables are used throughout Shasta Cloud to present structured data efficiently. They appear on pages such as **Venues**, **Infrastructure**, **Clients**, **Networks**, and more. Each table includes a consistent set of controls for navigating, filtering, and customizing the displayed data.

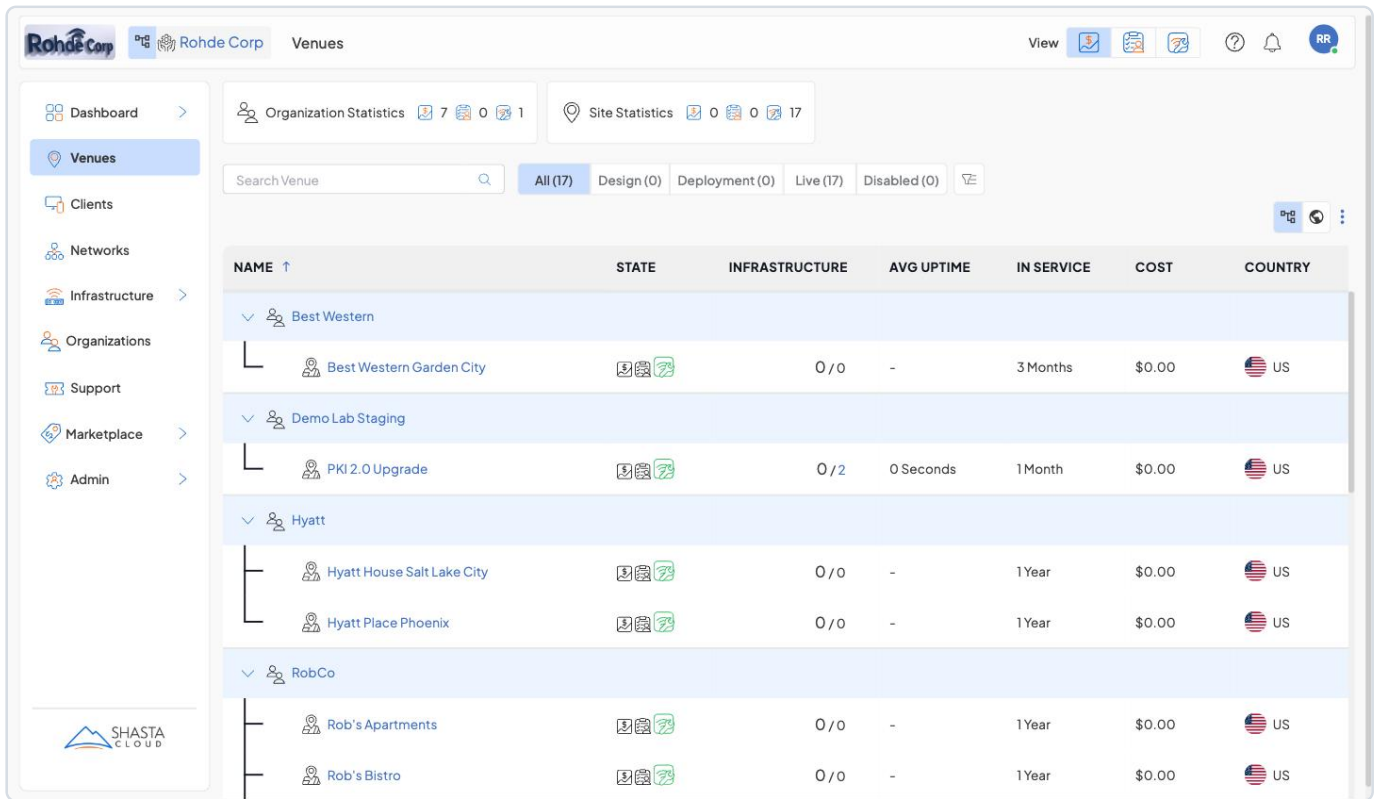


Figure 4 — Venues page showing a full table in Hierarchy View with column headers, expand/collapse icons, quick filter tabs, search bar, and table view selector.

## Navigating Tables

The key controls available on most tables are:

#	Control	What it does
1	<b>Column Headers</b>	Display the names of the currently visible columns. Hovering over a sortable column header reveals sort arrows.
2	<b>Expand / Collapse Hierarchy</b>	If a table supports a hierarchical structure (e.g., Organizations → Venues), expand ( > ) and collapse ( v ) icons appear to the left of parent rows, allowing you to drill into nested data.
3	<b>Table View Selector</b>	Located in the upper-right area of the table. Switches between <b>Hierarchy View</b> (grouped/nested) and <b>List View</b> (flat). List View is useful when you want to see all records without grouping.
4		

#	Control	What it does
	<b>Breadcrumb / Actions ( ... )</b>	The three-dot menu next to the view selector provides additional table-level actions such as <b>Export</b> and <b>Bulk Edit</b> (where available).
5	<b>Column Settings</b> (⚙️)	A gear icon at the far-right of the column header row (visible after scrolling right). Opens the <i>Select columns you want to display</i> panel.
6	<b>Quick Filters &amp; Custom Filters</b>	Quick filter tabs (e.g., <i>All, Online, Issues, Offline, Pending</i> ) appear above the table. The filter icon (🔍) opens the Filters side panel with additional options.
7	<b>Search Box</b>	The search bar at the top allows you to search by name, MAC address, or other attributes. Not all column values are searchable.
8	<b>Table Display Area</b>	Presents the data based on all active view, filter, search, and column settings.

NAME ↑	OPERATIONS	STATUS	MAC ADDRESS	ORGANIZATION & VENUE	PRIVATE IP	CONNECTED
226G-1PV 24 Port Switch • RSW226G-1PV	⚠️	Offline	24fe9a10d0f5	RohdeCorp Labs Eagle Nest Ln	10.0.1.223	
AP_7c21 Ceiling • RAP-7110C	⚠️	Offline	24fe9a107c21	Demo Lab Staging PKI 2.0 Upgrade	10.100.0.48	
AP_F130 Ceiling • EAP-111		Pending	0ce0fc97f130	Demo Lab Staging PKI 2.0 Upgrade		
Basement AP Ceiling • WF-196		Online	04b6be139e08	RohdeCorp Labs Eagle Nest Ln	10.0.1.80	
EAP-105 with Shasta Sticker Ceiling • EAP-105		Online	0ce0fcd79f5d	Shasta MDU Shasta MDU	10.20.20.10	MDU Main Switch Port 1
IDF1 Switch 24 Port Switch • ECS-4150-28P		Shell		Shasta MDU Shasta MDU		
IDF2 Switch		Shell		Shasta MDU		

Figure 5 — Infrastructure page in List View. All devices appear as a flat list with columns for Name, Operations, Status, MAC Address, Organization & Venue, Private IP, Connected To, Uptime, Release, Traffic, and Clients.

### Three-Dot Actions Menu

The breadcrumb menu reveals the table's available actions. On simple tables like Venues, only **Export** is offered; on infrastructure tables, both **Export** and **Bulk Edit** are available.

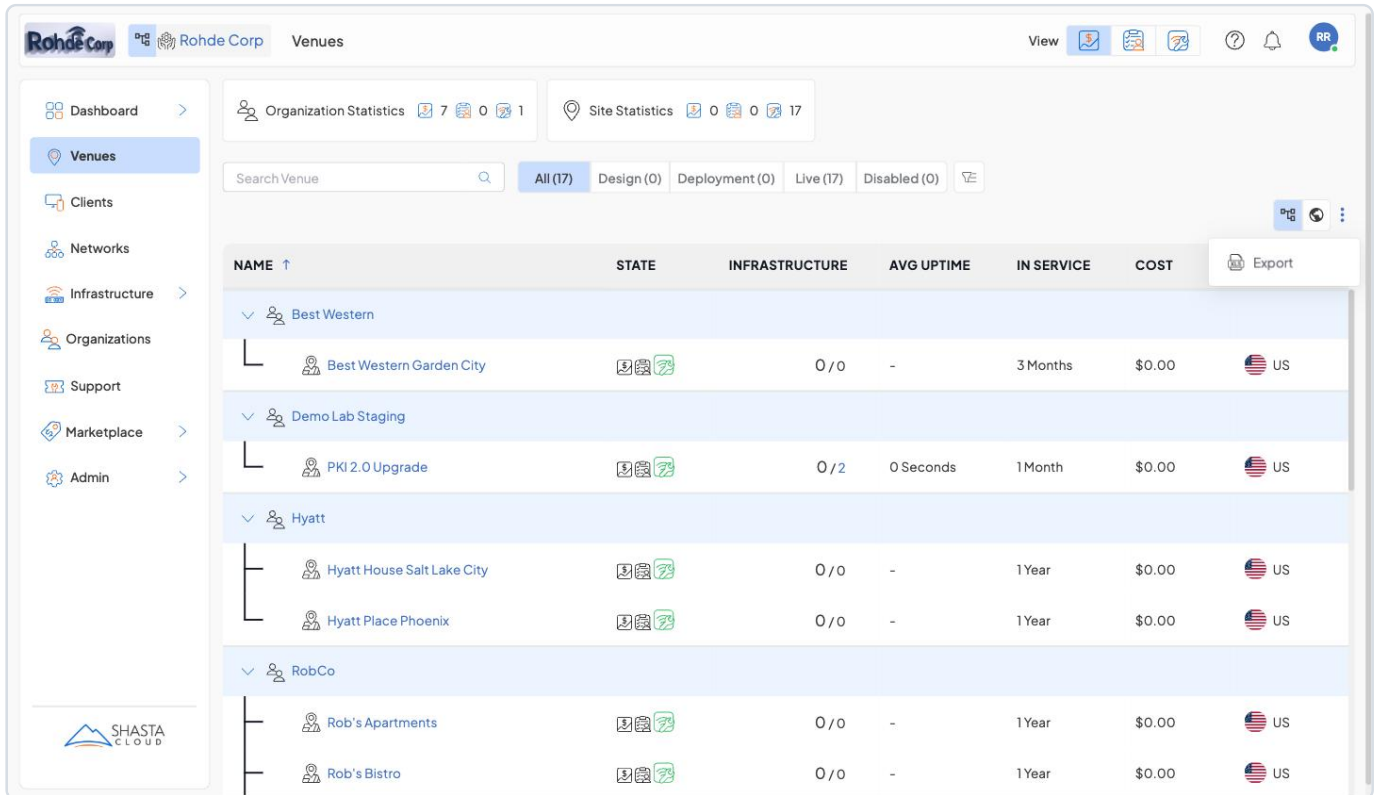


Figure 6 — The three-dot breadcrumb menu open on the Venues table, showing the Export option.

Figure 7 — The three-dot breadcrumb menu on the Infrastructure list view, showing both Export and Bulk Edit options.

## Column Settings

After scrolling the table right, the gear icon (⚙️) appears at the far-right of the column header row. Clicking it opens the column-selection panel where you can check or uncheck columns. Changes take effect immediately after clicking **Apply**.

The screenshot displays the Shasta Cloud Infrastructure management interface. At the top, there's a navigation bar with the Rohde Corp logo and 'Infrastructure / Infrastructure' breadcrumb. A sidebar on the left contains navigation options like Dashboard, Venues, Clients, Networks, Infrastructure (selected), vWarehouse, Profiles, Firmware, Organizations, Support, Marketplace, and Admin. The main content area features several widgets: 'Infrastructure' showing 'No Change (Today)' and '3/8 Online'; 'Online Infrastructure' line graph; 'Infrastructure Release Status' bar chart with categories like In Progress (0%), Failed (13%), Scheduled (0%), Out of Date (25%), and Up to Date (63%); and 'Infrastructure Inventory (8)' bar chart. Below these is a search bar and filter tabs (All (11), Online (3), Issues (3), Offline (3), Pending (2), Shell (3)). The main table has the following data:

ADDRESS	ORGANIZATION & VENUE	PRIVATE IP	CONNECTED TO	UPTIME	RELEASE	TRAFFIC	CLIENTS	
9a10d0f5	RohdeCorp Labs Eagle Nest Ln	10.0.1.223		6 Days ago				⚙️
9a107c21	Demo Lab Staging PKI 2.0 Upgrade	10.100.0.48		23 Days ago	3.5.30			⋮
7fc97f130	Demo Lab Staging PKI 2.0 Upgrade							⋮
5be139e08	RohdeCorp Labs Eagle Nest Ln	10.0.1.80		1 Month	3.5.31			⋮
7fcd79f5d	Shasta MDU Shasta MDU	10.20.20.10	MDU Main Switch Port 1	1 Day	3.5.30			⋮
	Shasta MDU Shasta MDU							⋮
	Shasta MDU Shasta MDU							⋮

Figure 8 — Infrastructure table scrolled right, showing the ⚙️ gear icon at the far right of the column header row.

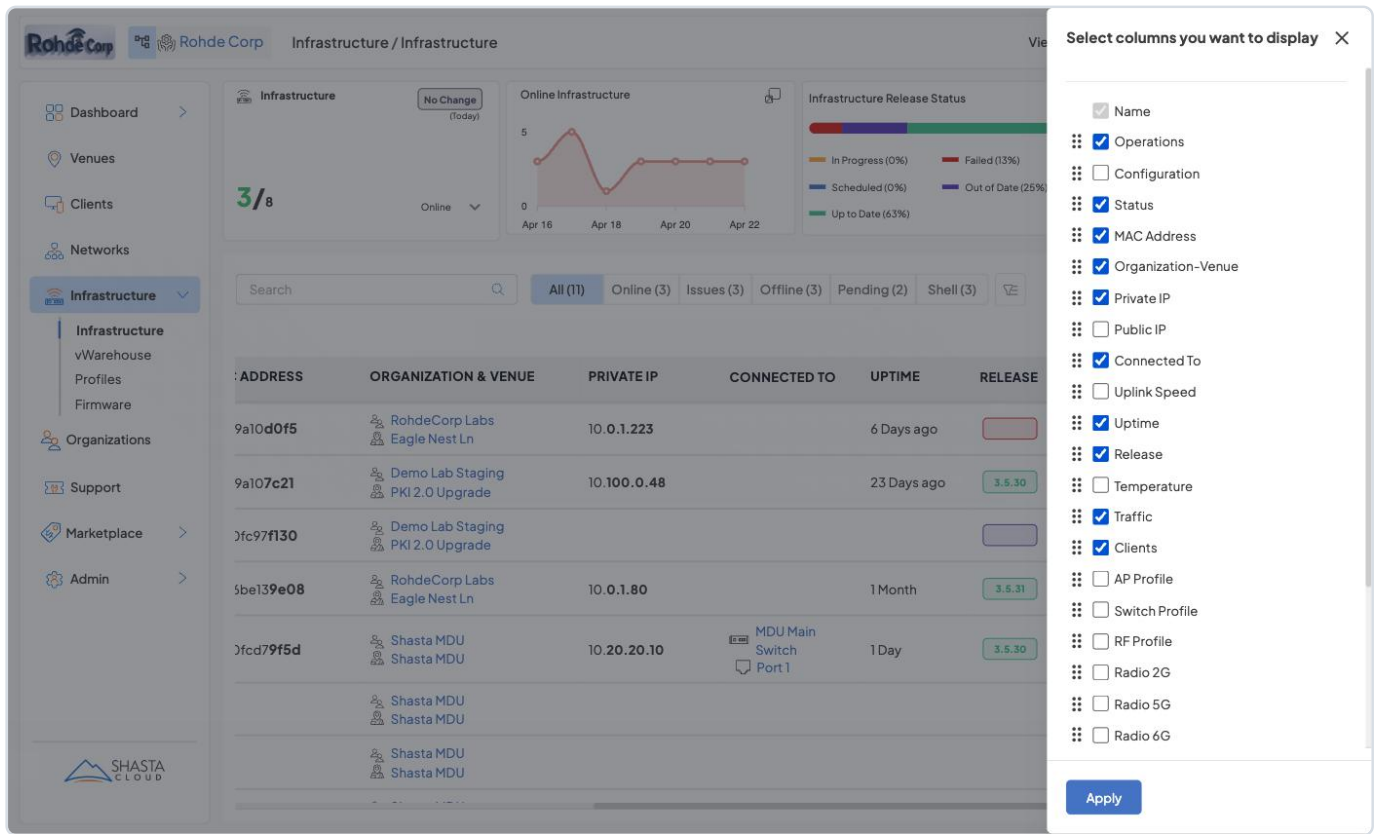


Figure 9 — Select columns you want to display panel, showing a list of columns with checkboxes and an Apply button.

## Quick Filters & Custom Filters

Above each table, quick filter tabs provide one-click scoping (for example **All**, **Design**, **Deployment**, **Live**, **Disabled**). For more granular filtering, click the filter icon to open the **Filters** side panel with additional options such as Organization, Operations, Countries, and States.

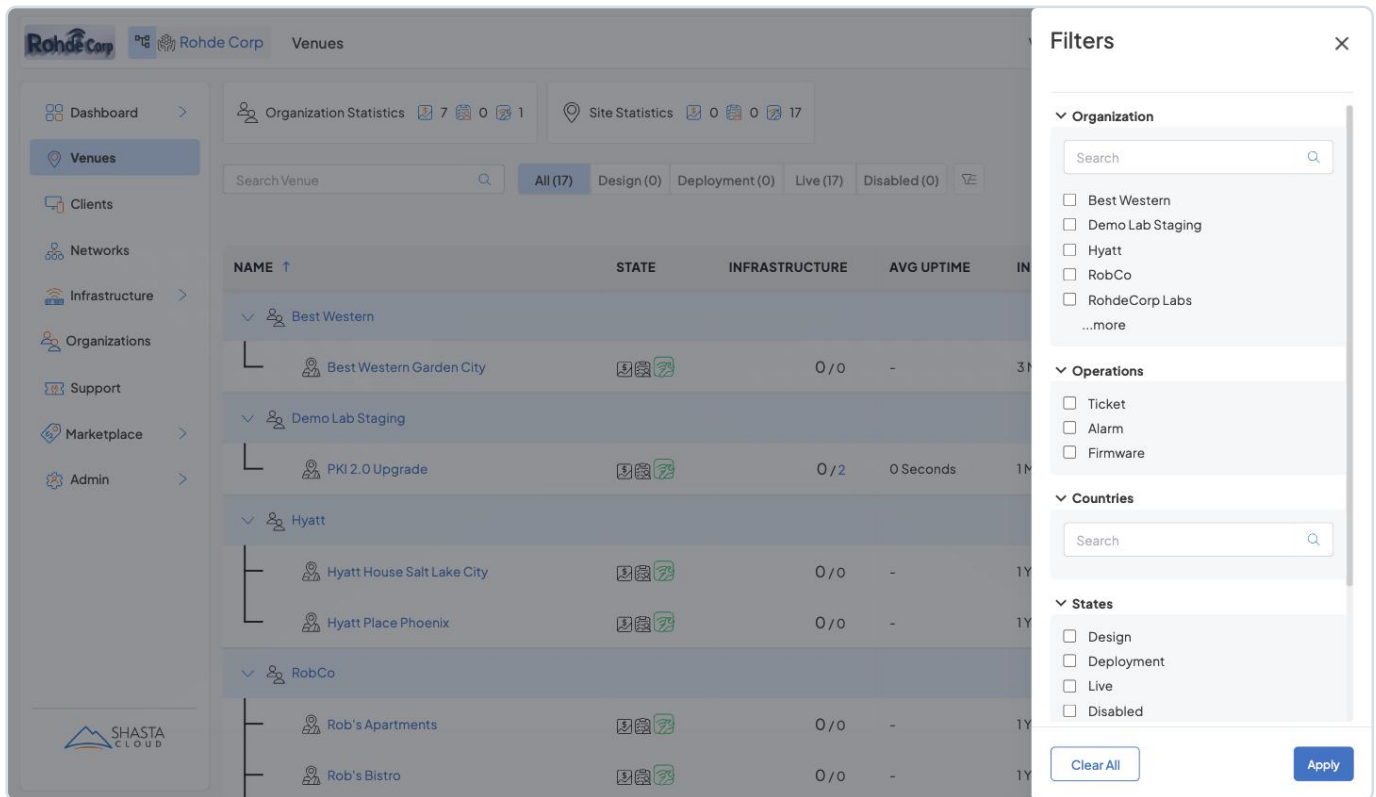


Figure 10 — Filters side panel open on the Venues page, showing Organization, Operations, Countries, and States categories with Clear All and Apply buttons.

## Sorting Table Entries

Sorting can be applied to columns that support it:

1. Hover over a column header to reveal the sort arrows.
2. Click the column header to sort in ascending order.
3. Click again to toggle to descending order.

A small arrow indicator on the column header shows the current sort direction (↑ for ascending, ↓ for descending).

**Note:** Not all columns support sorting. Hover over a column header to see if the sort arrows appear.

## Section 3 — Graphs

The graphing functionality in Shasta Cloud provides a powerful and flexible visualization tool for network operators, MSPs, and administrators. Graphs appear on venue overview pages, the dashboard, and various

infrastructure detail pages — either as standalone visualizations or as grouped multiple graphs within a single **Historical Trends** box.

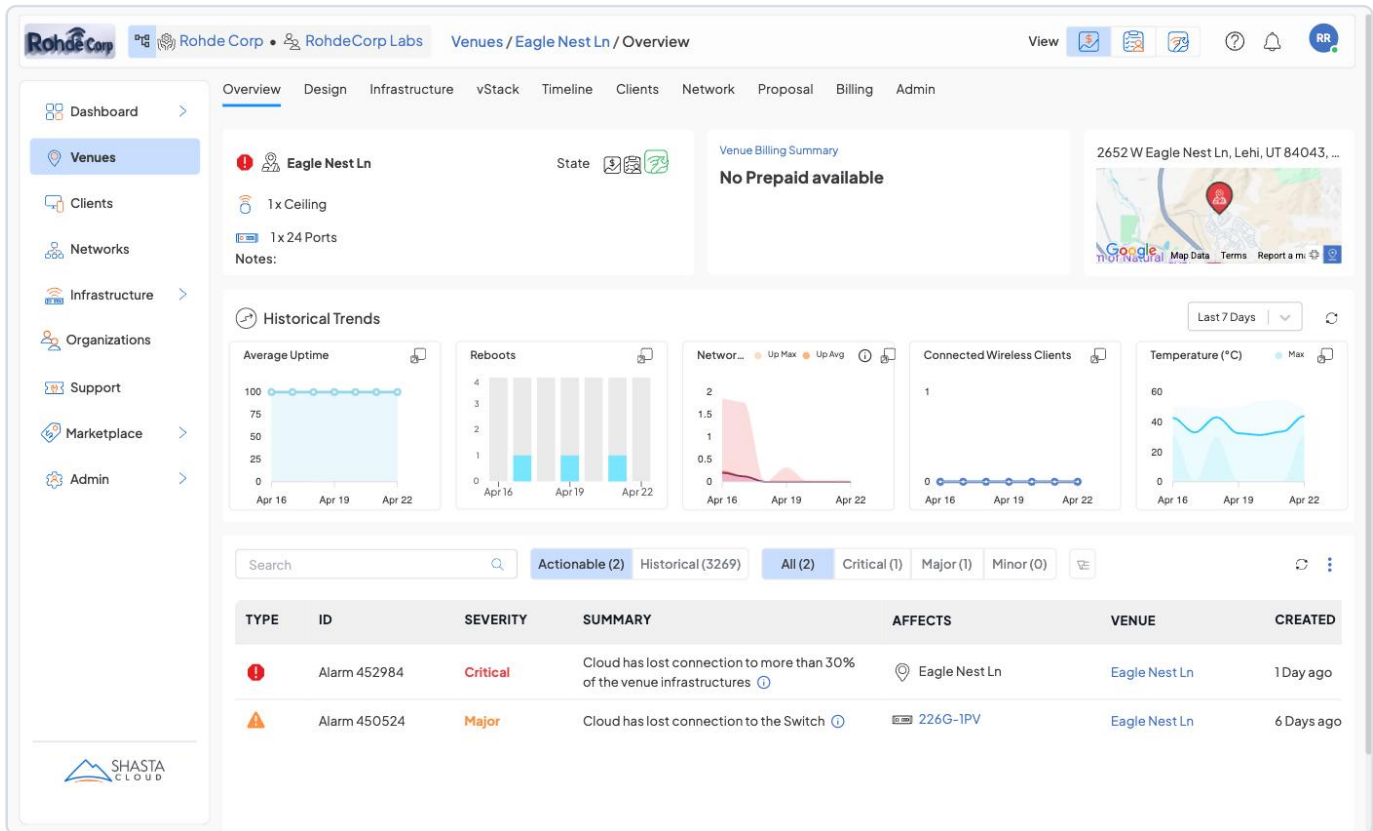


Figure 11 — Venue Overview page showing the Historical Trends section with 5 graphs side-by-side: Average Uptime, Reboots, Network Throughput, Connected Wireless Clients, and Temperature.

## Graph Controls & Features

Control	What it does
<b>Expand Icon</b>	Located at the top-right corner of each graph. Clicking opens the graph in a larger, full-detail modal view for easier analysis of trends and fluctuations.
<b>Time Range Selector</b>	Adjusts the time window for the displayed data. Options include <b>24 Hours</b> , <b>7 Days</b> , and <b>30 Days</b> .
<b>Refresh Button</b>	The circular refresh icon (next to the time range selector) forces an update on all graphs in the section, fetching the latest data from Shasta Cloud.

Control	What it does
<b>Hover Tooltips</b>	Hovering over any point on a graph displays a tooltip with precise values for that data point, including the date and metric value.
<b>Zoom Controls</b>	In the expanded graph view, use the <b>+</b> and <b>-</b> buttons, the mouse scroll wheel, or click-and-drag on the graph to zoom into a specific date range.
<b>Legends</b>	Where applicable, legends identify the plotted data series (e.g., Up Max, Up Avg for throughput graphs).

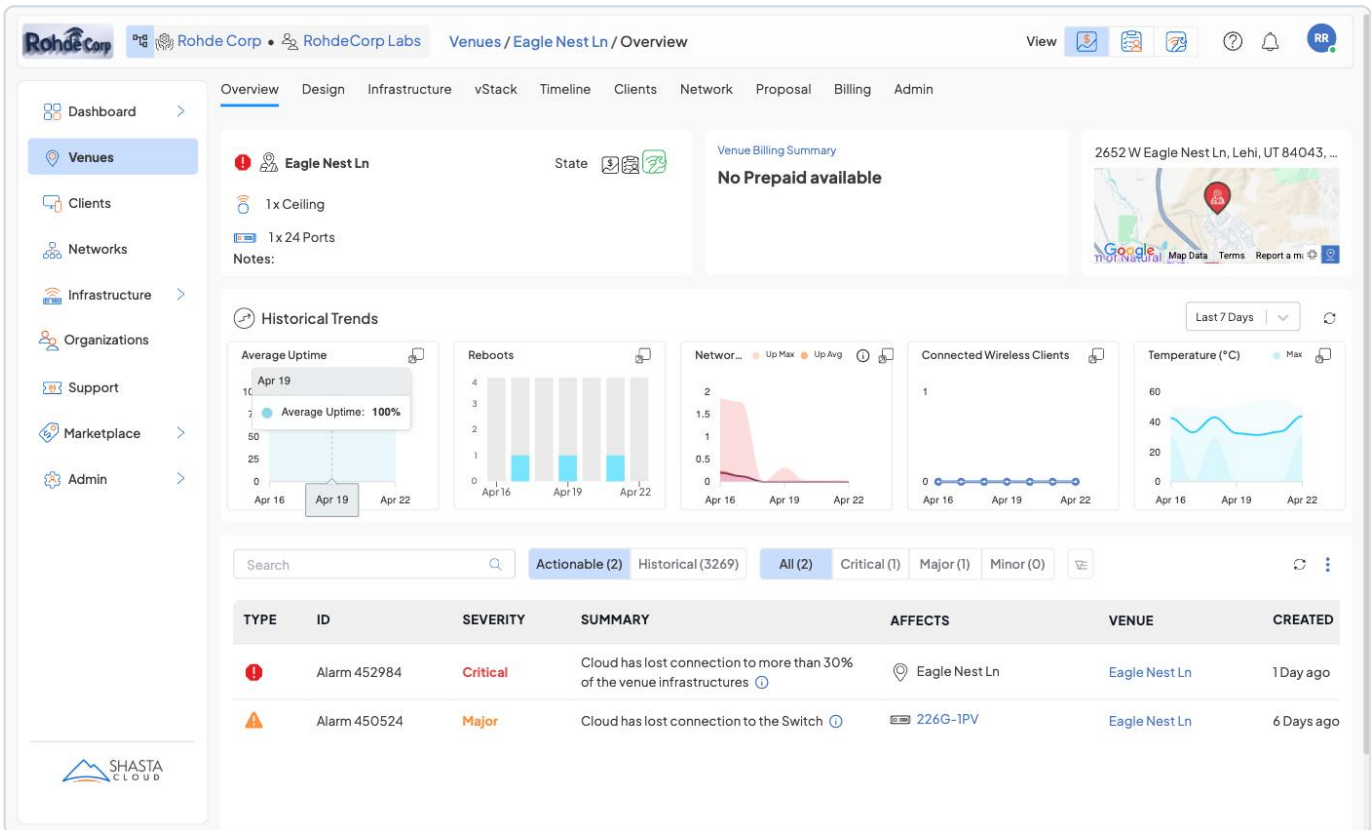


Figure 12 — Hover tooltip on the Average Uptime graph displaying the precise date and metric value for the hovered data point.

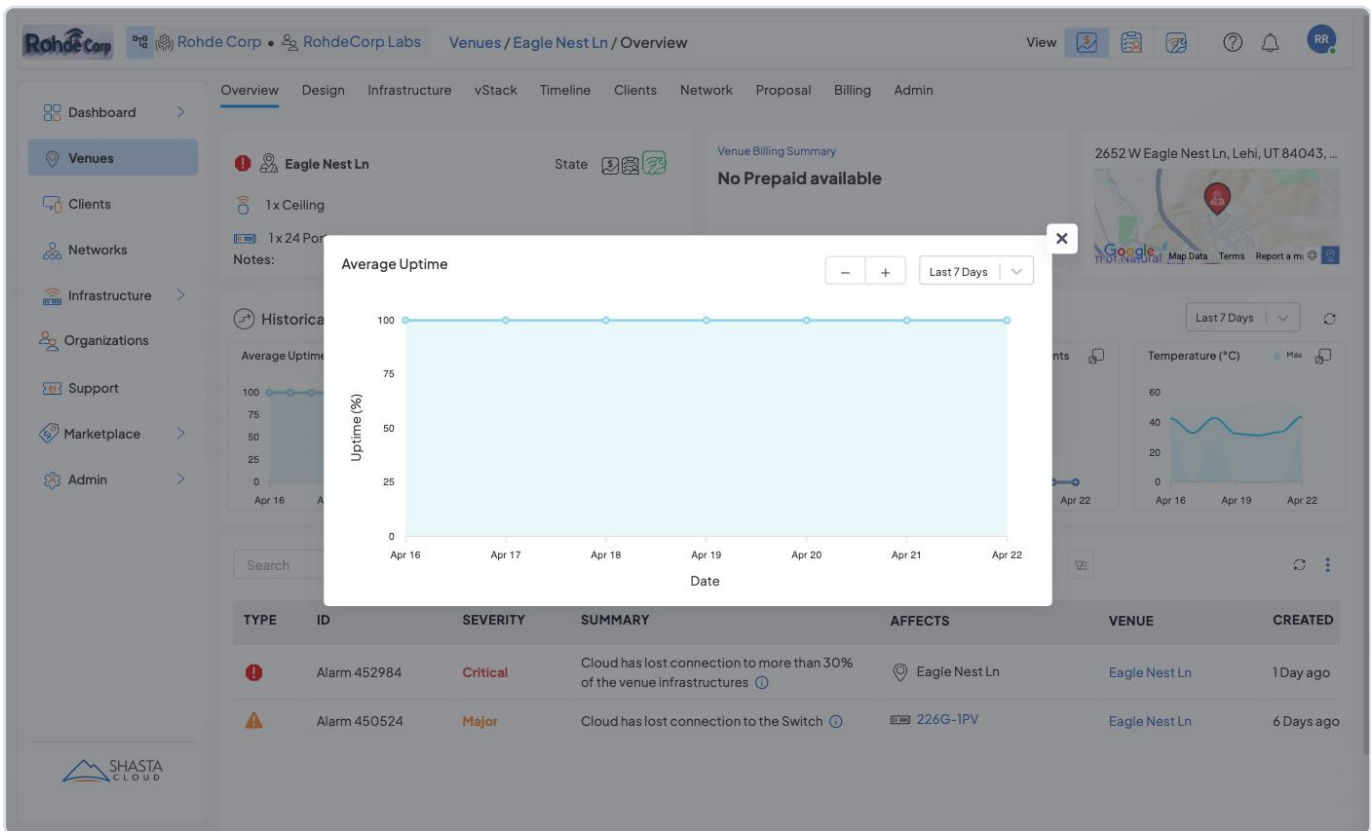


Figure 13 — Expanded graph modal showing Average Uptime in a large view with +/- zoom buttons, a time range dropdown, and a close button.

**Tip:** On multi-graph sections, all graphs share the same time range setting. Changing the time range dropdown updates all graphs in the group simultaneously.

## Section 4 — Hierarchies

Shasta Cloud organizes network management through a hierarchical structure. From top to bottom, the hierarchy is:

**MSP → Sub-MSP (optional) → Organization / Business → Venue → Sub-Venue**

You can navigate this hierarchy using the tree viewer accessible by clicking the hierarchy icon (the branching-tree icon) in the top-left header area next to the Shasta Cloud logo and org name. Expanding and collapsing nodes is done using the > (expand) and v (collapse) icons.

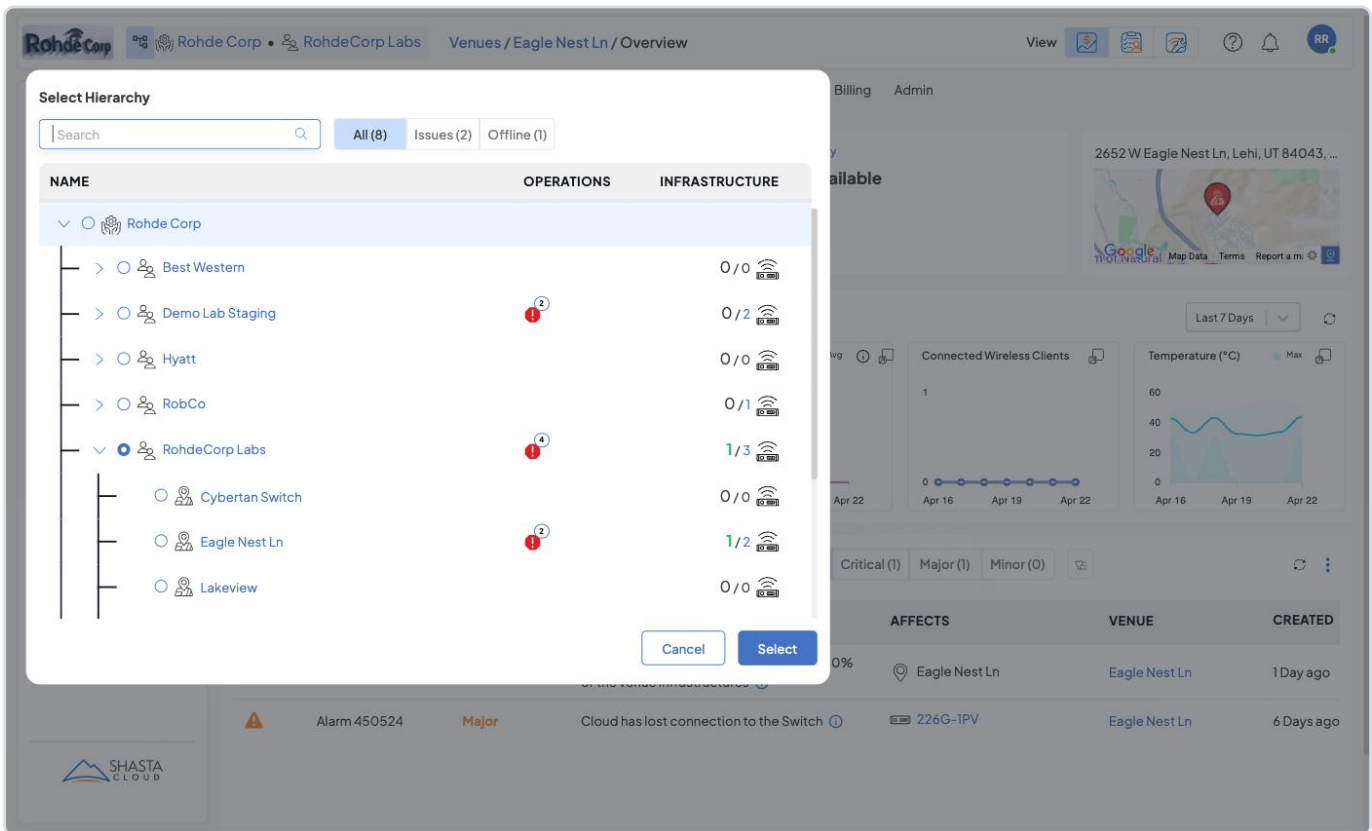


Figure 14 — The Select Hierarchy tree viewer panel, showing the full MSP hierarchy with Operations status icons and Infrastructure counts per node. Filter tabs (All, Issues, Offline) and a Search bar appear at the top.

Tables on pages such as Venues also display the hierarchy inline, with indented tree lines connecting parent and child entries:

NAME ↑	STATE	INFRASTRUCTURE	AVG UPTIME	IN SERVICE	COST	COUNTRY
Eagle Nest Ln	[Icons]	1/2	1 Month	3 Years	\$0.00	US
Lakeview	[Icons]	0/0	-	2 Years	\$0.00	US
Merrill Hall	[Icons]	0/0	-	1 Year	\$0.00	US
Snow	[Icons]	0/1	0 Seconds	8 Months	\$0.00	US
TruMinds	[Icons]	0/0	-	1 Month	\$0.00	US
Shasta MDU						
Shasta MDU	[Icons]	2/5	1 Day	4 Days	\$0.00	US
TELUS						
TELUS Org						
TELUS Apartment	[Icons]	0/0	-	2 Months	\$0.00	CA
TELUS Hotel	[Icons]	0/0	-	2 Months	\$0.00	CA

Figure 15 — Venues table showing deep hierarchy with indented tree lines linking a parent organization to its sub-venues.

Selecting a node in the hierarchy tree viewer filters all pages to show only data relevant to that node and its children. Click **Select** to apply, or **Cancel** to dismiss without changing the context.

## Section 5 — Multitasking

Shasta Cloud supports seamless multitasking by allowing users to work on multiple sections simultaneously using separate browser tabs or windows. This is especially useful for comparing views, monitoring dashboards while making configuration changes, or troubleshooting across multiple venues at once.

### Benefits

Benefit	Description
<b>Increased Efficiency</b>	Perform multiple tasks simultaneously without navigating back and forth between sections.

Benefit	Description
<b>Improved Monitoring</b>	Keep critical dashboards (such as Active Alarms or Firmware Status) open in one tab while configuring settings in another.
<b>Enhanced Troubleshooting</b>	Compare different views or logs across multiple tabs to diagnose and resolve issues faster.

## How to Open Multiple Tabs or Windows

- **New Tab:** Right-click on any menu item or link in the UI and select **Open Link in New Tab**.
- **New Window:** Right-click and select **Open Link in New Window** — useful when working across multiple monitors.
- **Independent Navigation:** Each tab or window operates independently, so you can perform different tasks without interrupting your workflow.
- **Session Continuity:** The platform maintains session persistence across tabs, so your authentication and settings remain intact when switching between views.

## Section 6 — Data Exports

Shasta Cloud provides a flexible data export feature, allowing users to download table data in Excel format ( `.xlsx` ) from most pages. This is useful for offline analysis, sharing with stakeholders, building custom reports, or maintaining audit records.

### How to Export Data

1. Navigate to the page with the table you want to export.
2. Click the `...` (three-dot breadcrumb) menu in the upper-right area of the table.
3. Select **Export** from the dropdown.
4. The data currently shown in the table (applying any active filters, search, and column settings) will be downloaded as an `.xlsx` file.

**Note:** Some tables may not yet support data export. If the **Export** option is not visible in the three-dot menu, that table does not currently support this feature.

## Common Uses for Data Exports

### Analysis & Reporting

**Network Performance** — client connection data, AP performance, traffic trends

**Capacity Planning** — client density trends for optimizing AP deployment

**Custom Reporting** — format exported data for external analytics tools

### Operations & Compliance

**Troubleshooting** — logs for diagnosing connectivity and authentication issues

**Audit & Compliance** — records of network events for security audits

**Forensics** — historical data for investigations

## Best Practices for Efficient Exports

- **Filter Before Exporting** — apply relevant filters (time range, SSID, venue) to narrow the dataset and reduce file size.
- **Understand File Size** — large datasets take longer to generate. Shasta Cloud is tested to handle approximately 5,000 entries per export across supported tables.
- **Use Consistent Date Formats** — ensure exported date fields are formatted correctly in Excel to avoid misinterpretation.
- **Ensure Data Privacy Compliance** — when sharing exports, be mindful of sensitive data such as MAC addresses or user-specific information.

## Common Issues & Troubleshooting

Issue	Resolution
Export button not available	Check the three-dot breadcrumb menu; some tables require you to switch to List View first, or the table may not yet support export.
Excel file not opening properly	Large files may need additional processing time. Try reopening with a compatible application. Contact Shasta Cloud Support if the issue persists.
Data missing from export	Verify that any active filters are intentional — the export respects all currently applied filters.
Performance delays	Break exports into smaller subsets using date or venue filters to improve performance.

## Section 7 — List Scrolling

Shasta Cloud uses progressive (lazy) loading to optimize performance when displaying large datasets. Rather than loading all records at once, the UI displays an initial set of entries and loads more as you scroll down.

### How It Works

1. When you navigate to a page with a large list, an initial batch of entries is displayed.
2. As you scroll down, the message *"Scroll to see more"* may appear, indicating additional entries are available.
3. Continue scrolling to load the next batch.
4. When all entries have been loaded, the page displays *"Showing N result(s)"* at the bottom, indicating the complete dataset has been fetched.

This pattern is used throughout Shasta Cloud in sections such as:

- **Client Device Lists** — connected devices across a network
- **Infrastructure Lists** — APs and switches across different venues
- **Event Logs & Alerts** — system logs loaded without overwhelming the UI

### Best Practices for Efficient List Navigation

- **Use Filters to Narrow Results** — apply filters or use the search bar to retrieve specific records instead of scrolling through long lists.
- **Allow Time for Large Datasets** — pause briefly while scrolling to allow data to load.
- **Avoid Rapid Scrolling** — scrolling too quickly before entries finish loading can trigger unnecessary API requests and slow data retrieval.
- **Check for "Showing N result(s)"** — this message confirms all available data has been loaded.

### Common Issues & Troubleshooting

Issue	Resolution
Data stops loading midway	Check your network connection. Try refreshing the page to reload the list from the beginning.
List seems too long to navigate	Use the search bar, quick filters, or column sorting to quickly locate what you need instead of scrolling.

---

Issue	Resolution
Entries appear out of order	Check if a sort is applied — lists are often sorted by default (e.g., by name or date). Click a column header to change the sort order.

---

For further assistance, contact Shasta Cloud Support by creating a support ticket from the **Support** section of the platform.